

2026 SPRING  
**NEWSLETTER**

*A Fresh Look for* LASFAA



**LASFAA**

LOUISIANA ASSOCIATION OF  
STUDENT FINANCIAL AID ADMINISTRATORS

*Empowering Thoughtful Leaders*



# A LETTER FROM THE PRESIDENT



**LASFAA Members,**

## EXCITING UPDATES

I am thrilled to share some exciting updates from our association! First, I am proud to announce the rebrand of LASFAA, complete with a new logo that reflects our commitment to growth, innovation, and the vibrant community we serve. The board is buzzing with excitement about this new look, and we hope you love it as much as we do! Special shoutout to our awesome Rebrand Committee that spent countless hours working to perfect it—thank you!!

## SPRING CONFERENCE RECAP

Our Spring Conference in Natchitoches was an overwhelming success, with 66 attendees joining us for informative sessions, engaging networking, and plenty of fun. A heartfelt thank you to all the volunteers who made this event possible—you are the backbone of our association. I also want to extend a special thank you to our vendors and session presenters for supporting LASFAA and contributing to the success of the conference.

As we continue our work in financial aid, I want to take a moment to recognize the perseverance and adaptability that define our profession. With ongoing changes from the Department of Education, including the upcoming impacts of the OB3 Bill, it sometimes feels like the rules change just as quickly as we master them (and just when we think we've got everything figured out!).

If financial aid had a theme song, my top 2 contenders lately would be "I Will Survive" and "Stronger (What Doesn't Kill You)." But in true LASFAA fashion, we continue to adjust, support one another, and keep moving forward. Because at the end of the day, our commitment to students never changes, even when everything else does.

## LOOKING AHEAD

Mark your calendars for **October 14–16, 2026**, in Lafayette, Louisiana: "Mission Control – Navigating the Universe of Aid."

A **Boot Camp** for members with 0–3 years of experience will be held **October 13, 2026**.

Thank you for being part of this incredible community. Together, we are navigating the universe of financial aid and helping students succeed across Louisiana.

- KATIE STEWART

**2026 LASFAA PRESIDENT**

## IN THIS ISSUE

- LETTER FROM THE PRESIDENT
- MEET THE LASFAA BOARD MEMBERS
- THANKS TO OUR SPONSORS
- MILDRED D. HIGGINS SCHOLARSHIP
- WHO'S NEW & WHO'S HIRING!
- NASFAA ARTICLE
- LETTER FROM THE VP
- SPRING CONFERENCE RECAP
- LOSFA UPDATE
- BIRTHDAY SPOTLIGHT
- FAO SPOTLIGHT



## SCHOLARSHIP OPPORTUNITY

Up to **FIVE** students  
can receive \$400 each!

Apply at:  
[lasfaa.org](https://lasfaa.org)



# MEET THE LASFAA BOARD MEMBERS

Lead. Collaborate. Make an Impact.



## WELCOME TO LASFAA!

The LASFAA Board is responsible for the management of the Association. The board consists of the executive committee (elected officers), delegates, and the chairpersons of the Association's standing committees.

**VOLUNTEER TODAY!**



### FINANCIAL AID AWARENESS

Suggests ideas to provide information to students and families regarding financial aid opportunities.

### LEGISLATIVE ADVOCACY

To monitor legislative activity on a state and national level when financial aid programs are involved.

### Long Range Planning

To do a complete overview and evaluation of LASFAA.

## LASFAA

### EXECUTIVE BOARD

**President:** Katie Stewart

**1<sup>ST</sup> Vice President:** Taishieka Davis

**Immediate Past President:** Amanda Brady

**2nd Vice President:** Brittany Terrio

**Treasurer:** Lynette Viskozki

**Executive Secretary:** Katelyn Gaudin

## LASFAA

### SYSTEM DELEGATES

**LAICU/Proprietary:** Roland Keller

**Louisiana Community and Technical College System:** Trey Clark

**LSU System:** Shaina Bridges

**Southern System:** Consuela Dozier

**UL System:** Alexandra Mashon

## LASFAA

### COMMITTEE CHAIRS

**Amenities:** Katelyn Gaudin

**Cost of Attendance:** Harold A. Martin

**Fall Program:** Brittany Terrio & Katie Stewart

**Fall Site:** Amanda Brady

**Spring Program:** Brittany Terrio

**Spring Site:** Taishieka Davis

**Diversity Awareness and Professional Development:** Latasha Hales

**Exhibitor Liaison:** Joni Leggio

**Financial Aid Awareness: CHAIRPERSON NEEDED**

**Finance:** Taishieka Davis

**Legislative Advocacy: CHAIRPERSON NEEDED**

**Long Range Planning: CHAIRPERSON NEEDED**

**Member Relations:** Rebecca Amy

**Nominations, Awards, and Archives:** Amanda Brady

**Publications:** Marcela Goings

**Site Selection:** Ann Carmichael

**SWASFAA Liaison:** Anna Daigle

**Technology/Automation:** Bradley Meyers

**Training:** Alexandra Mashon

# THANK YOU TO ALL OF OUR SPONSORS!

LASFAA sincerely thanks our 2026 sponsors for their continued partnership and support of professional development and member engagement.

They're made ready to do something great. We're ready to *help them*.



Simple —it's how student loans should be. That's why we design our lending experience with advice and tools in ways that work best for you and your students:

- Easy application process with no origination or disbursement fees
- Personalized expertise from a lender who understands the education journey
- Flexible repayment options
- SAP is not required
- Students can apply to cover a past-due balance\*
- Access to College Raptor, Citizens' free college planning partner. This tool can help students discover affordable colleges, explore potential careers, find scholarships and more.

We're here for *answers*. Visit [citizensbank.com/FAA](https://citizensbank.com/FAA)



\*Past Due Balances: Students or parents may apply for the Citizens Student Loan and Parent Loan to cover a past due balance within 365 days after the end of the enrollment period.

[Click here to Read the Lela Link](#)

# the Lela Link



We're happy to welcome our longtime colleague, Johnny Manela, to the Louisiana Education Loan Authority (Lela) team. As a college and financial services student aid manager for two decades, Johnny joined Lela and other partners in working to bring education opportunities to Louisiana students. In this new role, he'll manage Lela's outreach efforts and scholarship programs to help make post-secondary education a reality for students and their families.

**CHOOSE LOUISIANA Scholarship \$1,000**

LOUISIANA COLLEGE STUDENTS

REGISTER FOR A CHANCE TO WIN AT

**Lela**  
LOUISIANA EDUCATION LOAN AUTHORITY  
WWW.LELA.ORG

*Committed to Louisiana students since 1984*

**NEED ADDITIONAL FUNDING TO COVER YOUR COLLEGE EXPENSES?**

STUDENTS OR PARENTS WHO NEED TO "FILL A FUNDING GAP" AFTER FACTORING IN ALL SCHOLARSHIPS, GRANTS, FEDERAL AND STATE DOLLARS, CONSIDER-

**Lela CHOICE**  
LOUISIANA'S NONPROFIT EDUCATION LOANS

Choose Quality. Choose Community. Choose Lela.

FOR MORE DETAILS AND TO APPLY, VISIT [LELACHOICE.ORG](https://LELACHOICE.ORG)

*Pre-Qualify Now!*

FOR MORE INFORMATION ABOUT LELA'S PROGRAMS, CONTACT US:

ANN CARMICHAEL, MARKETING & PROGRAM DEVELOPMENT MANAGER | [CARMICHAEL@LELA.ORG](mailto:CARMICHAEL@LELA.ORG)  
JONI LEGGIO, VICE PRESIDENT | [LEGGIO@LELA.ORG](mailto:LEGGIO@LELA.ORG)

# MILDRED D. HIGGINS HIGH SCHOOL SCHOLARSHIP

Up to **FIVE** students  
can receive **\$400** each!  
**\$305** raised so far at Spring Conference!

## THE LEGACY OF MILDRED D. HIGGINS:

Ms. Mildred D. Higgins was a highly respected leader in financial aid and a longtime advocate for students across Louisiana. She dedicated many years of service to both the Louisiana Association of Student Financial Aid Administrators (LASFAA) and the state's higher education system. Most notably, she served as the Director of Financial Aid at Xavier University of Louisiana, where she made a lasting impact on countless students and families.

Throughout her distinguished career, Ms. Higgins was recognized for her exceptional contributions, including being named LASFAA's Woman of the Year in 1990 and receiving the organization's Lifetime Achievement Award in 2001. She retired from Xavier University in 2012, leaving behind a legacy defined by compassion, leadership, and an unwavering commitment to student success.

In honor of her remarkable career and the lives she touched, LASFAA renamed its High School Scholarship in 2010 to the LASFAA Mildred D. Higgins High School Scholarship. Each year, LASFAA continues to raise funds for this program, ensuring that her legacy lives on by supporting future generations of students, just as Ms. Higgins did throughout her career.

## INTERESTED IN SUPPORTING THIS SCHOLARSHIP?

GIVE. IMPACT. REPEAT.

DONATE



## HOW YOU CAN HELP:

- Share the flyer with students and families (download [HERE](#))
- Post on your institution's financial aid or admissions webpage
- Include in outreach to high school counselors and college access programs
- Promote on social media or student newsletters

Students can apply by visiting [www.lasfaa.org](http://www.lasfaa.org).

By sharing this scholarship, you are helping extend Ms. Higgins' legacy of supporting student success across Louisiana.



**Congratulations to our Mildred D. Higgins  
Scholarship Raffle Winner!**

Ellie Torrance, Southeastern Louisiana University

# WE ARE HIRING

Does your institution have job openings?  
Complete the [Google Form](#) to submit your posting.

## DILLARD UNIVERSITY

ASSISTANT DIRECTOR OF FINANCIAL  
AID & SCHOLARSHIPS

[APPLY HERE!](#)

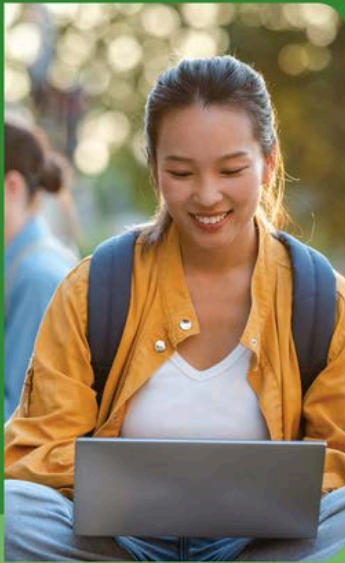
## SOUTHEASTERN LOUISIANA UNIVERSITY

COORDINATOR  
OF SCHOLARSHIPS

[APPLY HERE!](#)

In the moments  
that matter,  
students need  
more than  
reminders.

They need  
a partner.



Scan to learn about  
outreach that moves  
students forward.



 Inceptia

© 2026 Inceptia



# THE LASFAA NEWSLETTER

## NEWS FROM NASFAA

THE U.S. DEPARTMENT OF EDUCATION HAS ANNOUNCED THAT BORROWERS CURRENTLY ENROLLED IN THE SAVE REPAYMENT PLAN MUST SELECT A NEW REPAYMENT OPTION. BEGINNING JULY 1, BORROWERS WILL HAVE 90 DAYS TO CHOOSE A NEW PLAN AFTER BEING CONTACTED BY THEIR LOAN SERVICER, OR THEY WILL BE AUTOMATICALLY PLACED INTO A STANDARD OR TIERED REPAYMENT PLAN.

BORROWERS CAN SWITCH PLANS AT ANY TIME, WITH OPTIONS INCLUDING INCOME-DRIVEN PLANS AND A NEW TIERED STANDARD PLAN. HOWEVER, SOME PLANS—INCLUDING SAVE, PAYE, AND ICR—ARE SET TO PHASE OUT BY JULY 1, 2028.

QUESTIONS REMAIN ABOUT HOW QUICKLY APPLICATIONS WILL BE PROCESSED, AS MILLIONS OF BORROWERS MAY NEED TO TRANSITION PLANS AND THERE IS ALREADY A BACKLOG OF APPLICATIONS.

[READ MORE HERE.](#)

# A Better Student Loan Experience.



- ✔ Simple Application.
- ✔ Personalized Loans.
- ✔ Happy Customers.

College **AVE**®

**WHO'S NEW?**  
WELCOME TO FINANCIAL AID!

**IRIEL FORTE-COLLINS**  
FINANCIAL AID COUNSELOR  
SOUTHERN UNIVERSITY AT NEW ORLEANS

**SIERRA CURREY**  
FINANCIAL AID COUNSELOR  
SOUTHEASTERN LOUISIANA UNIVERSITY

Complete the [Google Form](#) to submit your posting.

Google Form



## Rise Above the Student Loan Noise.

Fly high with our smart loan options to fill the gap between cost of attendance and federal financial aid. Advantage Education Loans are the low-interest rate solution you need — for Undergraduates, Graduates, Professional students — and their parents.

KHESLC is a nonprofit lender.  
Advantage Education Loans are serviced by ARC Servicing.

[AdvantageEducationLoan.com](http://AdvantageEducationLoan.com) | **800.988.6333**



**ADVANTAGE**  
**Education Loan**

# A LETTER FROM THE VICE PRESIDENT

LASFAA Members,

## Leadership Conference

I am pleased to share that I had the opportunity to attend the **NASFAA Leadership Conference** in Washington, D.C., held February 7-12, 2026. During this conference, I participated in the Association Leadership Pathway in my role as Vice President. This track was designed for individuals who currently serve in, or aspire to serve in, leadership roles within a financial aid association.

## Leadership Insights & Responsibilities

This pathway provided valuable insight into legal responsibilities and best practices for association leaders. One of the key sessions I attended focused on how a board can serve with excellence.

The session highlighted the core legal duties of board members, including the **Duty of Care, Duty of Loyalty, and Duty of Obedience:**

**Duty of Care** – Emphasized reviewing materials in advance, asking thoughtful questions, staying actively engaged, seeking clarification when needed, and participating fully in board education and orientation activities.

**Duty of Loyalty** – Emphasized board members should act in the best interests of the association and remaining free from personal, professional, or financial conflicts that could influence judgment.

**Duty of Obedience** – Ensuring the organization’s actions remain aligned with its mission, governing documents, and applicable laws and regulations.

## Leading Through Change

Kotter’s 8 Steps for Leading Change was also introduced as a valuable model for directors, supervisors, and future leaders. This framework can help reduce resistance to change and provides practical tools for team development and organizational growth.

Download Kotter’s 8 Steps [HERE](#).

## Ideas from Peer Associations

During the conference, leaders from several financial aid associations shared their experiences and strategies for increasing member engagement and participation.

Highlighted ideas included:

- New member orientation programs
- Personalized welcome letters
- Recognition of member birthdays and anniversaries
- A podcast featuring conversations between experienced and new members

Additional recommendations included developing a five-year financial plan, establishing multi-year sponsorship agreements, and using surveys to better understand how members can contribute to the association.

Offering virtual mini-conferences—especially those that extend beyond traditional financial aid topics—was also encouraged to support broader professional development.

## Washington, D.C.



Overall, the NASFAA Leadership Conference provided meaningful strategies and perspectives that will support my continued growth as an association leader and enhance my contributions within our professional community.

Warm Regards,

**Taishieka Davis**

**2026 LASFAA VICE PRESIDENT**



# STEEL MAGNOLIAS OF FINANCIAL AID

## ROOTED THROUGH CHANGE

On March 12th, sixty-six LASFAA members from across Louisiana gathered at Northwestern State University in Natchitoches for the 2026 Spring Conference. Inspired by the strength and resilience of Louisiana’s magnolias, the event brought financial aid professionals together for a day of learning, connection, and shared purpose. Attendees explored timely topics, heard key updates, and connected with colleagues from across the state, all while building relationships that help us navigate an ever-changing environment. Like Steel Magnolias, we continue to grow stronger together.



AMANDA BRADY, LCTC  
AND  
JONI M. LEGGIO, LELA



KATIE STEWART  
SOUTHEASTERN LOUISIANA UNIVERSITY



MICHELLE ENRIQUEZ  
CITIZENS

THANK YOU TO ALL OF OUR SPONSORS!

### LAGNIAPPE SPONSORS



### PELICAN STATE SPONSORS



# ROCKEFELLER STATE WILDLIFE SCHOLARSHIP

Application Deadline Extended  
**May 1, 2026**

## LOSFA Update

**TOPS** PROCESSING FOR 2026 HIGH SCHOOL GRADUATES WILL BEGIN ON  
**FRIDAY, JUNE 5, 2026.**

A NEW **GEAUX TEACH** APPLICATION IS IN THE WORKS! VISIT THEIR WEBSITE FOR MORE  
INFORMATION.

## APPROVED UNIVERSITIES

Louisiana State University  
Louisiana Tech University  
McNeese State University

Nicholls State University  
Northwestern State University  
Southeastern State University

Southern University and A&M College  
University of Louisiana at Lafayette  
University of Louisiana at Monroe

## APPROVED MAJORS

030101 B.S. Wildlife Conservation  
030501 B.S.F. Forestry  
030508 M.S. Urban Forestry  
030601 B.S. Wildlife Management  
030201 B.S. Natural Resources Ecology Management  
030301 M.S. Fisheries  
030301 M.S. Natural Resources/Conservation

030301 Ph.D. Natural Resources/Conservation  
030506 B.S. Forestry Management  
030501 M.S. Forestry  
030501 Ph.D. Forestry  
030601 M.S. Wildlife  
030601 Ph.D. Wildlife and Fisheries Science  
261302 M.S. Marine and Environmental Science

**Wildlife and Fisheries officials have indicated that the following majors will be reviewed on a case-by-case basis before approval is granted:**

- 260101 Biology Degrees
- 261102 Biostatistics
- 400607 Oceanography Coastal Science and Coastal Environmental Science

**APPLY NOW**

# Celebrating Our Wonderful LASFAA Members; Happy Birthday!

Allison Dering  
Sowela Technical Community College

Ana Nanney  
L.E. Fletcher Technical Community College

Anita G Breaux  
South Louisiana Community College

Anna Daigle  
LSU Health Science Center New Orleans

Anna Vaughan  
University of Holy Cross

April Adams  
Nicholls State University

Bobbie B Decuir  
University of Louisiana at Lafayette

Brandy St. Pierre  
Nicholls State University

Brent Swann  
Louisiana State University A&M

Casie Triche  
Nicholls State University

Cherie Collet  
Tulane University

Chris Mireles  
McNeese State University

Chrystal D Woodard  
Louisiana Tech University

Dale E Miniex  
University of Louisiana at Lafayette

DeLannie N Delahoussaye  
University of Louisiana at Lafayette

Dionne St. Cyr  
Louisiana Tech University

Ebony D Holmes  
LOSFA

Ines Johnson  
Louisiana State University A&M

Jashinna Henderson  
Nicholls State University

Jeffrey Massey  
Louisiana State University - Alexandria

Jodie D Boudreaux  
University of Louisiana at Lafayette

John K Pierre  
Southern University - Baton Rouge

## January-April, 2026

**If you'd like LASFAA to recognize you in our next newsletter, please log into your account and update your profile!**

**Go to: [Login](#) > [My Profile](#) > [Edit Profile](#)**



Joyce A Scott-Clippis  
Southern University - New Orleans

Katie Starling  
McNeese State University

Kayla Hullaby  
Bossier Parish Community College

Kelly Savoie  
Sallie Mae

Kim Tanner  
University of Louisiana at Lafayette

Landon Hebert  
Louisiana State University A&M

Lauren M. Sanders  
L.E. Fletcher Technical Community College

Linda Wimbley  
Louisiana State University - Shreveport

Lou Murray  
Earnest

Lynette Viskozki  
Centenary College of Louisiana

Mandy Hoffman  
Southeastern Louisiana University

Marcela Goings  
Southeastern Louisiana University

Marla Herrington  
University of Louisiana at Monroe

Michelle Phelps  
Unitech Training Academy

Nathaniel McDougle  
Louisiana Tech University

Natalie Pittman  
Southern University - Baton Rouge

Patrick Blackwell  
ITI Technical College

Rebecca Amy  
SOWELA Technical Community College

Scott Burke  
LOSFA

Shelby Mccarty  
Nicholls State University

Sheri E Butler  
Northwest Louisiana Technical Community College

Wendi L Robicheaux  
South Louisiana Community College

Whitney Bell  
University of Louisiana at Monroe



# FINANCIAL AID OFFICER SPOTLIGHT

## FUN FACTS:

I'm a huge hockey fan, I have a dog named Gaia, I love video games & I am LASFAA's 2026 Executive Secretary!

## FAVORITE PART OF MY JOB:

I love the community outreach! Going to events to help students fill out their FAFSAs has always been super fulfilling to me because you can tell some students are so worried about filling it out and making it easier for them makes my day.

## CAREER PATH:

I started financial aid by accident when my best friend got a job as a scholarship coordinator at LA Tech and made me apply for the services coordinator position at LA Tech financial aid office. I worked at Tech for 2 years before my short stint at Southeastern. I'm now at LSUHSC in New Orleans and love my small office!



**KATELYN GAUDIN**  
**LSU HEALTH SCIENCES NEW ORLEANS**

## FUN FACTS:

I marched with Phantom Regiment Drum and Bugle Corp's Color Guard in 2019, I have two dogs (Pytor and Walter) and a cat (Cooper), I love yard work and video games on the weekends.

## FAVORITE PART OF MY JOB:

The thing I love the most about my job is feeling the gratification of helping students to truly understand how Financial Aid works and being able to help them understand their situation.

## CAREER PATH:

I began working for Northwestern State University in The Department of Creative and Performing Arts in 2022 where I was responsible for the completion of scholarship contracts as well as other administrative tasks. In 2024, the scholarship office had a position become available so I applied and became a Financial Aid and Scholarship Officer. I am responsible for processing Faculty/Staff Exemptions as well as other administrative tasks like assisting with calls and emails.



**LANDON OLIVIER**  
**NORTHWESTERN STATE UNIVERSITY**

# FINANCIAL AID OFFICER SPOTLIGHT

## FUN FACTS:

I've played music in Carnegie Hall, I'm a coffee connoisseur (snob), my #1 bucket list item is to visit all 50 states (I'm currently at 25), AND I am LASFAA's 2025 Rookie of the Year!

## FAVORITE PART OF MY JOB:

Seeing the impact financial aid has on students and making the numbers make sense!

## CAREER PATH:

I started out at Fletcher in the Registrars office. I liked the policy side of records and registration so I applied for the Assistant Director of Enrollment job, which meant overseeing financial aid. After a couple years of growth and restructure, I ended up as Director of Enrollment, Admissions and Financial Aid--overseeing Recruitment, Admissions and Financial Aid Services for the College.



**TREY CLARK**  
FLETCHER TECHNICAL COMMUNITY  
COLLEGE



### Student loans for every kind of borrower

- Fixed and variable rate private student loans for
- + Undergraduate
  - + Graduate
  - + MBA
  - + Medical / Dental / Health Professions
  - + Law
  - + International
  - + DACA
  - + Parent

**Radically transparent, incredibly flexible**

All these benefits, and more

- 100% Rate Match Guarantee\*
- Zero fees, ever!
- No DTI analysis for grad borrowers
- NEW** No min income requirement
- No SAP Requirement
- Auto pay and loyalty rate discounts\*

Chosen as U.S. News & World Report's Best Private Student Loan Lender

For the fourth consecutive year!



Contact your dedicated Campus Partnerships representative to learn more about our additional benefits.



**Lou Murray**  
Senior Account Executive  
@ : lou.murray@earnest.com  
☎ : +1 (713) 775-3022  
@ : www.earnest.com/for-schools

This material is prepared for Financial Aid Office professionals only. Not to be circulated with potential consumers, including students. Earnest Private Student Loans are made by FirstWise Bank, Member FDIC. \*Please visit earnest.com/student-loan-discounts to learn more. © 2025 Earnest LLC. All rights reserved.



**Thank you for your partnership and all you do for your students.**

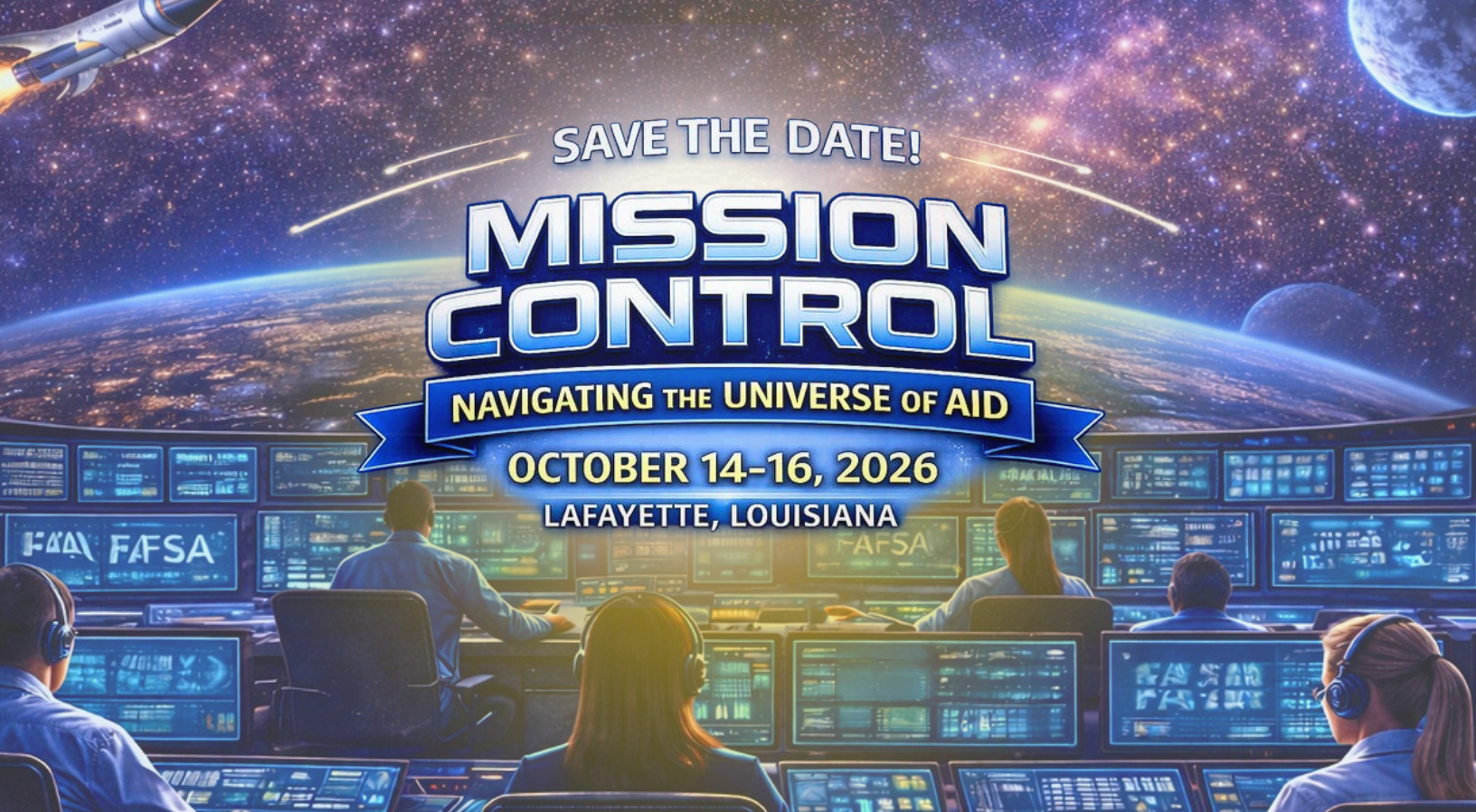
**monogram**

Personalized Student Loans

Contact Matt Lehmann:

mlehmann@monogramllc.com or visit monogramllc.com





SAVE THE DATE!

# MISSION CONTROL

NAVIGATING THE UNIVERSE OF AID

OCTOBER 14-16, 2026

LAFAYETTE, LOUISIANA



**SoFi**  
PRIVATE STUDENT LOANS

**We'll help you keep students focused on grades, not expenses.**

SoFi Private Student Loans could help your students cover **100% of school-certified costs**—with no fees and flexible repayment options.

**NO FEES**



Help your students **with tools to pay** for school.

[Learn more](#)



Conditions apply. SoFi Private Student loans are originated by SoFi Bank, N.A. NMLS # 696891 (www.nmlsconsumeraccess.org). Loan amount is \$1,000. For additional product-specific legal and licensing information, see SoFi.com/legal. 15124-20633.

# FINANCIAL AID WORD SEARCH

C C N L H Z U L S H H N E X V F B C T M K J D Q L  
 V E R N M Y A Y S I H N F A H Q W I S A B G E D A  
 H E J C L P A R E N T P L U S H S D Q X T R P U S  
 I H B V P A C E M M Q X R T I J Q M A T H A E F F  
 V J Y R L H O F Q N J B E G C A B L U I G N N A A  
 I L V P E R Y O R I G I N A T I O N P M P T D F A  
 W U Q X X A U S Q G L X B V H D G M R E A S E S P  
 E N T R A N C E C O U N S E L I N G F F V S N A E  
 Y B S T U D E N T A I D I N D E X L B R E U T K Z  
 Z Z X H Z K K I P W X A D L G L Q K Q A R B T D I  
 R E L I L M D B N E R X D I S U Q H D M I S E C H  
 E J P S K P R I V A T E L O A N M L A E F I J S V  
 P F Q A F A V S Y Q W G V D S A P P R S I D X E S  
 A N K D I S B U R S E M E N T S W F N L C I R R C  
 Y M B O I J G V Y G G U X L U N Y Q U V A Z F Z H  
 M X W P W H M U Z V R U M R U X R H G Y T E Z G O  
 E B P D A D H R E S I G N A T I O N W B I D C S L  
 N C G P E T U N S U B S I D I Z E D T L O O I Y A  
 T A B U D G E T G E F S Y A N G O P A Z N R H P R  
 J B W Z P I N D E P E N D E N T D Y E M D F H O S  
 Z D M H S Z D E P E N D E N C Y O V E R R I D E H  
 O P R O F E S S I O N A L J U D G M E N T H J Z I  
 X D M F J V Z Y V I N M Z X N Y N C Q K W J E B P  
 V L O S F A Q C O N T R I B U T O R U H A B N J S  
 B Q W D E C M G N O A S H K Z K R V S A P N B I Q

Disbursement	Entrance Counseling	Professional Judgment	Parent PLUS
Origination	Student Aid Index	Dependency Override	Grants
Independent	Max Time Frame	Subsidized	LOSFA
Repayment	Private Loan	Scholarships	FAFSA
Budget	Resignation	Unsubsidized	Pace
Dependent	Contributor	Verification	
SAP	GPA	MPN	

**FALL CONFERENCE**  
 DETAILS COMING SOON  
 VOLUNTEER [HERE!](#)

## Member/Sponsor Submission Guidelines

Share articles, member news, milestones, fun stories, or upcoming events.

Upload text/files (JPG, PNG, or Word) to our [Google Form](#) by **Aug. 1** to be featured in our next newsletter.

**Newsletter or Advertising Questions?**  
**Marcela Goings**  
 LASFAA Publications Chair  
 (985)549-3624  
[marcela.goings@selu.edu](mailto:marcela.goings@selu.edu)

*Thank You*